

The Expert's Choice

**By not leaving a mark,  
you leave a mark.**

The first vocs free microcement.

**TOPCRET**





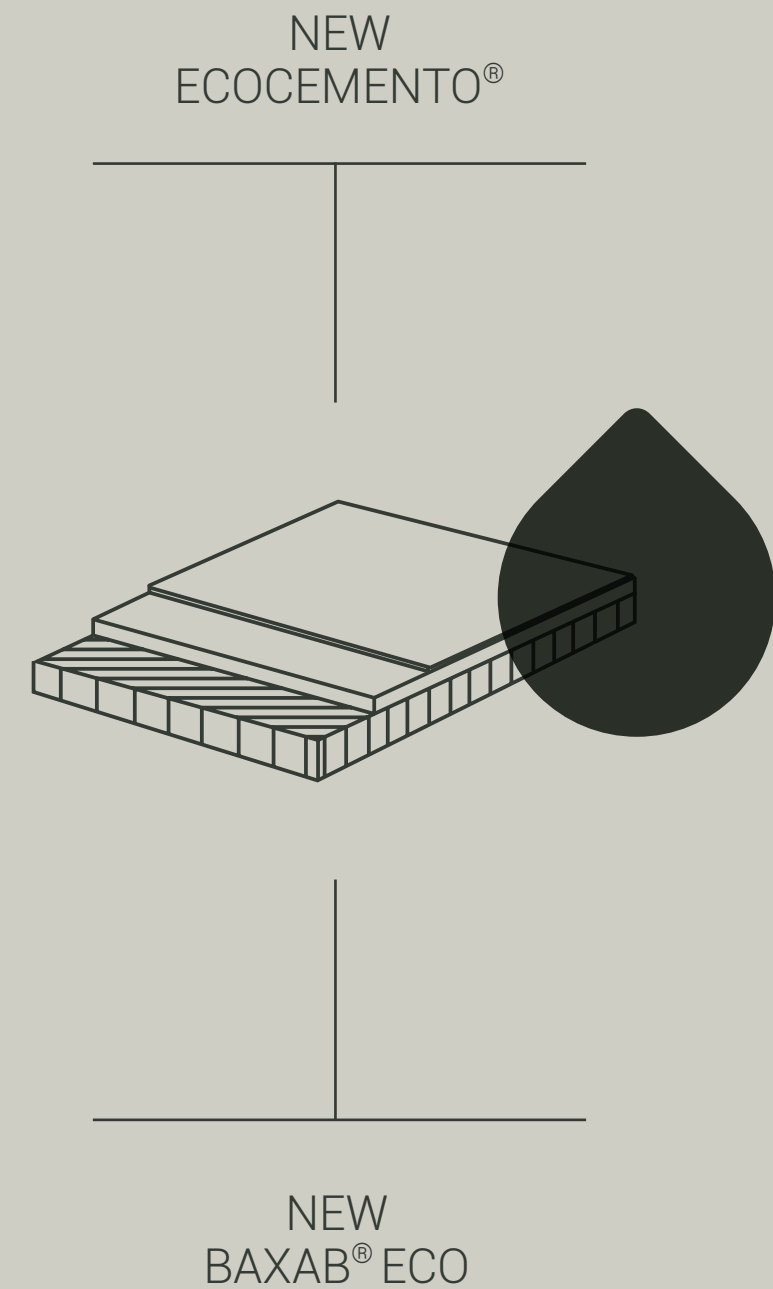
## Topcret Promise

Sustainability is one of humanity's major challenges nowadays. It's an uncompromising commitment in design, construction and is meant for products that were created in respect to the environment and its health -

# TOPCRET THE FIRST VOCs FREE MICROCEMENT

Being a pioneer is not only about having the creativity to invent, but about having the ability to innovate what already exists. We must anticipate and adapt to a society that's ever-evolving.

- Non-toxic and VOC Free
- LEED, BREEAM and WELL certified
- Water-Based
- Breathable
- Recyclable and Reusable
- Waterproof



# SUSTAINABILITY CERTIFICATION

Today, we are the only company in our category with products certified under the Well, Leed and Breeam standards.

Our results open doors for us to participate in works certified under the sustainable benchmark standards of the sector.



## WELL™ | Building Standard

Scientifically supported qualification system to measure, certify and monitor the characteristics of a product, with the aim of improving its impact on health and well-being.



## LEED | Leadership in Energy & Environmental Design

Based on scientific standards, it rewards the use of sustainable strategies in construction processes. Its mission is a responsible and healthy environmental system.



## BREEAM | Code For a Sustainable Built Environment

Promotes construction that has an impact on economic, environmental and social benefits. At the same time, it transfers Corporate Social Responsibility from the company to society.



## Well

A01 Air Quality

X01 Material Restrictions

X06 Restrictions VOCs

## Leed

MR Credit EDP

EQ Credit Low Emission Materials

## Breeam

HEA 02 Indoor Air Quality

MAT 01 Life cycle (EPD)

MAT 06 Material Efficiency

# NEW ECOCEMENTO®

**Sustainably designed:** The first microcement free of VOCs, caring for the people and the environment.

**Certified:** ECOCEMENTO® achieved the highest ranking on LEED, BREEAM and WELL certifications.

**Make it last:** You can renovate a space without demolition or change in floor height levels because it can be installed directly on top of almost all surfaces.

**Time is crucial:** That's why Microcemento® is open to foot traffic after 24hs.

**It is completely waterproof:** Suitable for outdoors, indoors, kitchens, bathrooms and any wet area.

The best way to leave a mark is by **not** leaving a mark.



Non-Toxic and VOCs Free



Certified Leed, Breeam y Well



Breathable



Waterproof

# NEW BAXAB<sup>®</sup> ECO

**Eco design:** The most Sustainably designed:  
it's water-based, non-toxic and free of VOCs.  
The most advanced microcement on the market.

**Certified:** BAXAB<sup>®</sup> achieved the highest ranking  
on LEED, BREEAM and WELL certifications.

**Make it last:** Its high resistance allows for  
intensive and prolonged use, not only in  
dwellings but also in commercial stores, public  
spaces and other high foot transit areas.

**Time is crucial:** Open to foot traffic after 24hs.

**It is completely waterproof:** Suitable for outdoor,  
indoor, kitchens, bathrooms, and any wet area.

**\*3x stronger than conventional microcements.**

The best way to make  
something sustainable  
**is to make it last.**



Non-Toxic and VOCs Free



Certified Leed, Breeam y Well



Water-Based



3x Stronger\*

We have tested the volatile emissions of Baxab® (VOCs) and we are proud to inform you that it has successfully passed all tests.

Reglamento o Protocolo	ECO Microcemento™	Baxab™	Versi—n dereglamento o protocolo
French VOC reg.	A+	A+	Decree of Mar11 (DEVL11091903D) and Arrete of Apr11 (DEVL1104875A) modified in Feb12 (DEVL1133129A)
French CMR components	Pass	Pass	Regulation of Apr and May09 (DEVP0908633A and DEVP0910046A)
Italian CAM edilizia	Pass	Pass	DM 23-06-22 n.256, GURI n.183 del 06-08-22
ABG/AgBB	Pass	Pass	Ausschuss zur gesundheitlichen Bewertung von Bauprodukten (Jun21)
Belgian Reg.	Pass	Pass	Royal decree of May 2014 (C-2014/24239)
BREEAM International	Exemplary Level	Exemplary Level	BREEAM International New Construction v6.0 (2011)
BREEAM Nor	Exemplary Level	Exemplary Level	BREEAM-NOR v6.0 New Construction (2022)
CDPH	Pass	Pass	CDPH/EHLB/Standad Method V1.2 (Jan17)
M1	Pass	Pass	M1 Protocol of Nov17



# ECOCEMENTO® & BAXAB®ECO THE FIRST MICROCEMENTS TO OBTAIN EPD

Topcret Introduces EcoCemento® and Baxab® Eco:  
The First Microcements on the Market to Obtain  
Environmental Product Declarations (EPD).

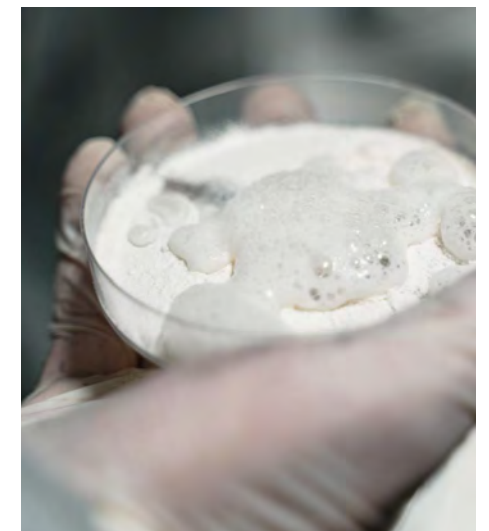
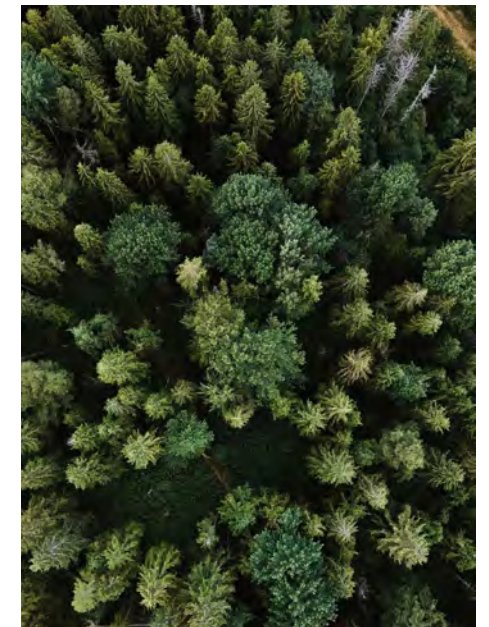
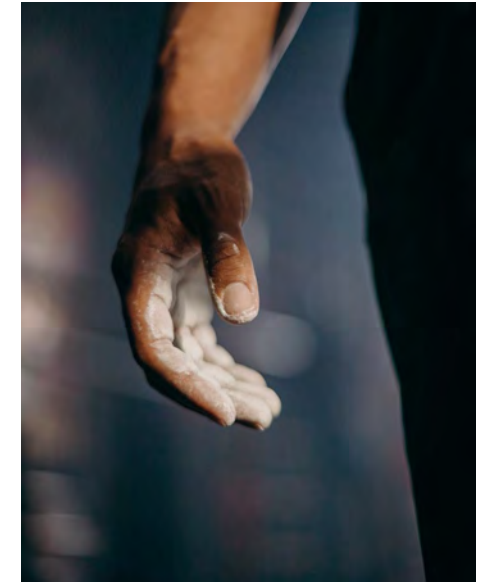
EcoCemento® and Baxab® Eco represent  
a significant milestone in the construction  
industry. These microcements offer a range of  
exceptional features that set them apart from  
conventional options. They are zero VOCs (volatile  
organic compounds), 100% water-based, locally  
handcrafted, and made to order. This unique  
combination not only ensures high-quality results  
but also minimizes their environmental impact.

By obtaining EPD certifications for EcoCemento®  
and Baxab® Eco, Topcret solidifies its dedication to  
providing reliable and transparent information to  
architects, designers, and builders.

The EPD is an independently verified analysis  
that provides comprehensive insights into the  
environmental impact of a product throughout its  
lifecycle, from raw material extraction to disposal.  
It enables professionals to evaluate and quantify  
various environmental factors such as energy  
consumption, greenhouse gas emissions, waste  
generation, and depletion of natural resources.

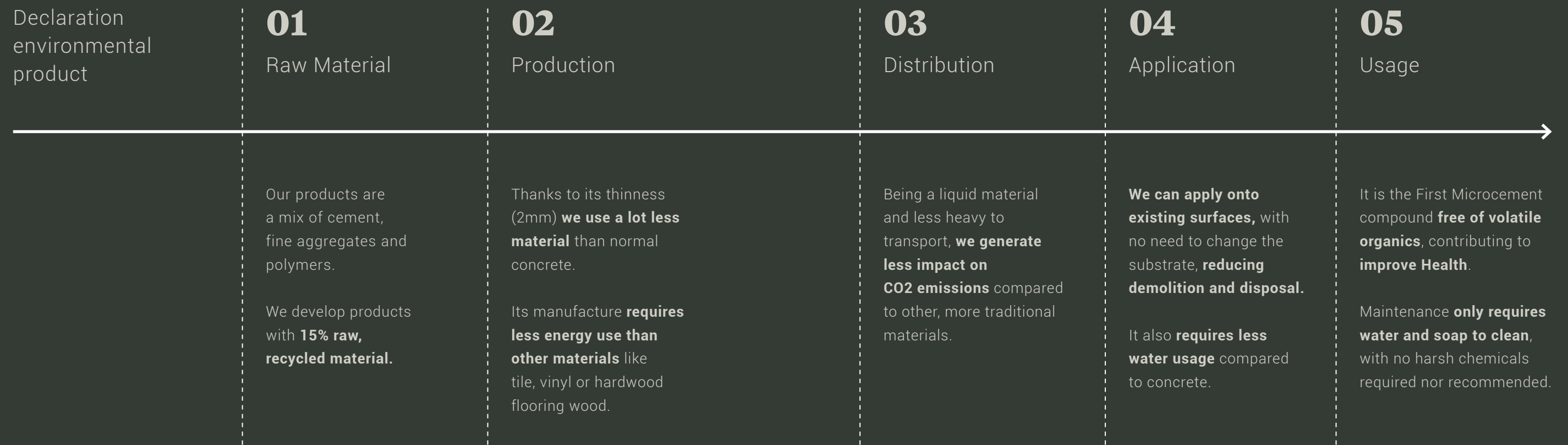
EcoCemento® and Baxab® Eco not only  
contribute to a more sustainable future but also  
deliver long-lasting and high-quality results.

Topcret continues to lead the industry by  
developing innovative and sustainable solutions  
that prioritize the well-being of individuals and  
the planet. With a 20-year history of technological  
innovation, a focus on sustainability, and a  
dedication to quality, Topcret remains the experts'  
choice in the construction industry.





**A sustainable attitude** is one that takes into account the impact of a product throughout its life cycle.



We have been committed for years in search of balance between **quality, innovation and sustainability.**



# CHROMATIC RANGE INSPIRED BY NATURE

Our colour experts have developed  
**over 40 nature-inspired base  
colours** to meet a wide range of  
applications.

---

 More than 40 colours available


---

 Bespoke colours


---

 Finishes in 2 textures

---

 Seamless floors

---

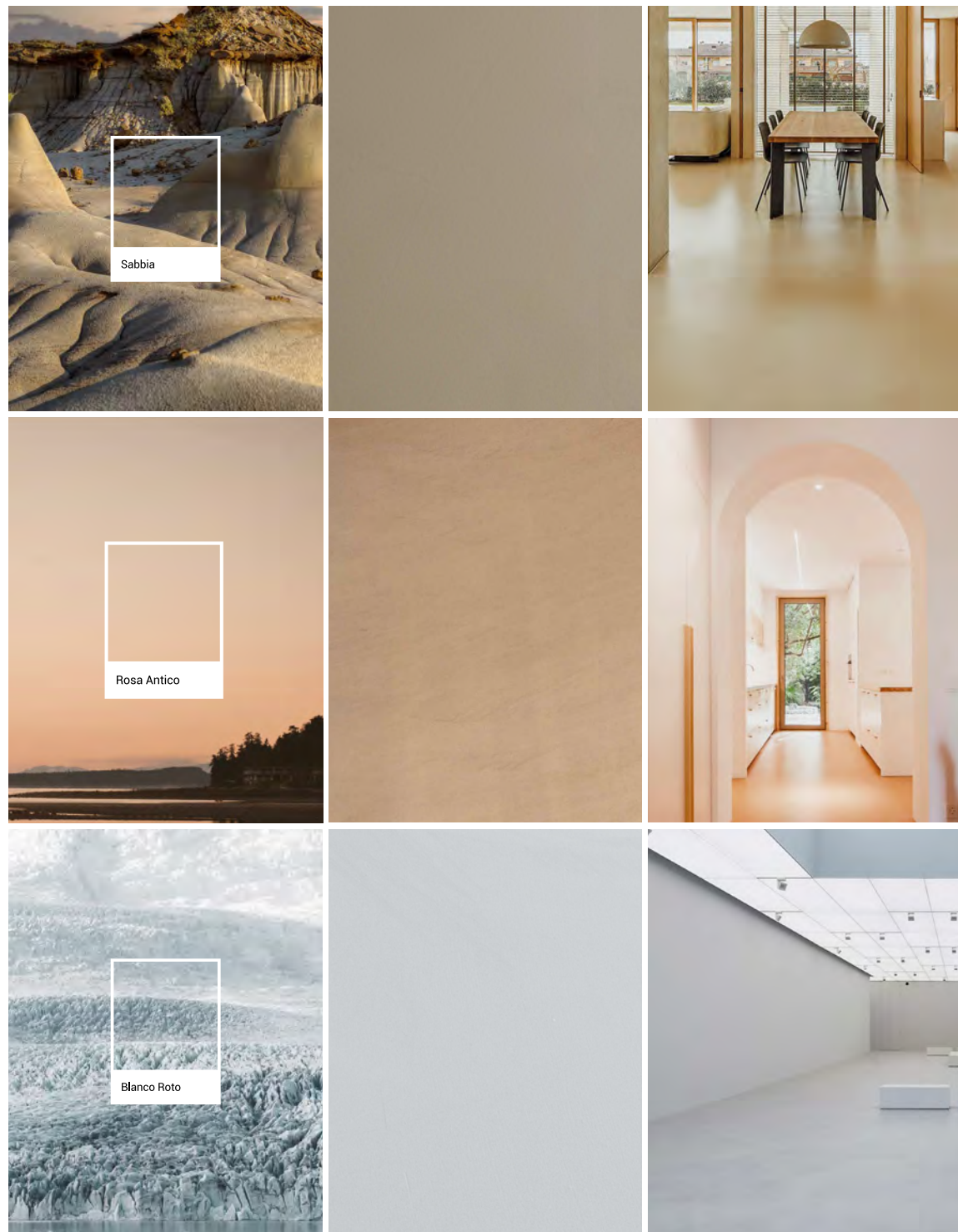
 Custom craft application

---



Cemento



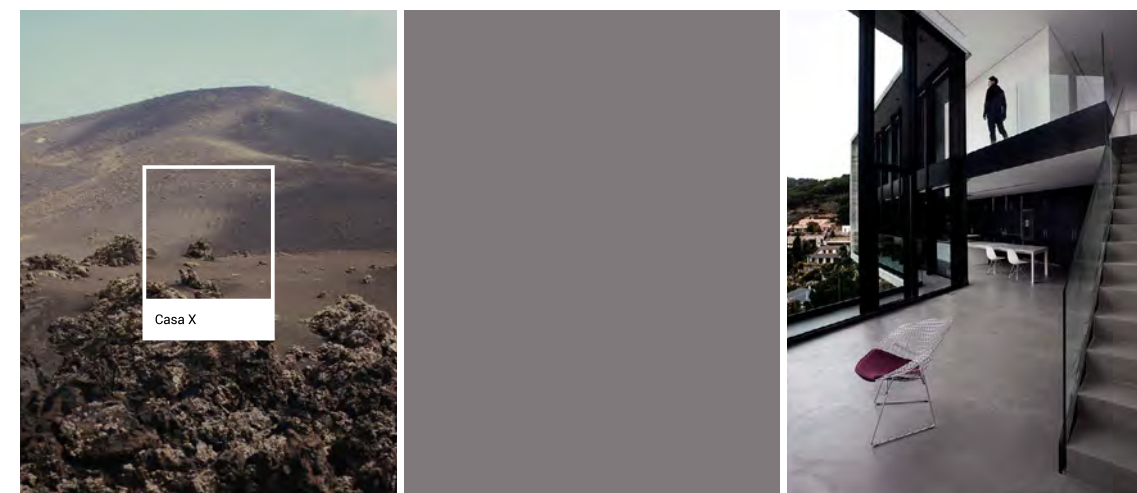


# PAINT TO SAMPLE



A Topcret innovation powered by your imagination. Create your own unique colour with Paint To Sample. It's the ultimate in colour personalisation and a unique opportunity to express yourself.

When you design your next home or office, it's not just a project... it's a dream fulfilled. People have very specific thoughts about what their dream should look like. We're extending the boundaries of what is possible



- + Architecture: Cadaval & Solà-Morales
- + Interiorism: Sandra Soler Studio
- + Location: Cabriels, Barcelona



# CONSCIOUS PROJECT MO DE MOVIMIENTO

Here everything has a 'purpose'  
and a 'why' based on **sustainability**.

---

+ Architecture: Estudio Lucas Muñoz

---

+ Photography: Sergio Albert/Gonzalo Machado

---

+ Location: Madrid

---

Mo de Movimiento is an innovative gastronomic concept with positive impact. In this project, everything is designed to contribute to sustainability, social integration and commitment to small producers.

A methodology that implies the revitalization of traditional trades and the reduction of their ecological footprint.

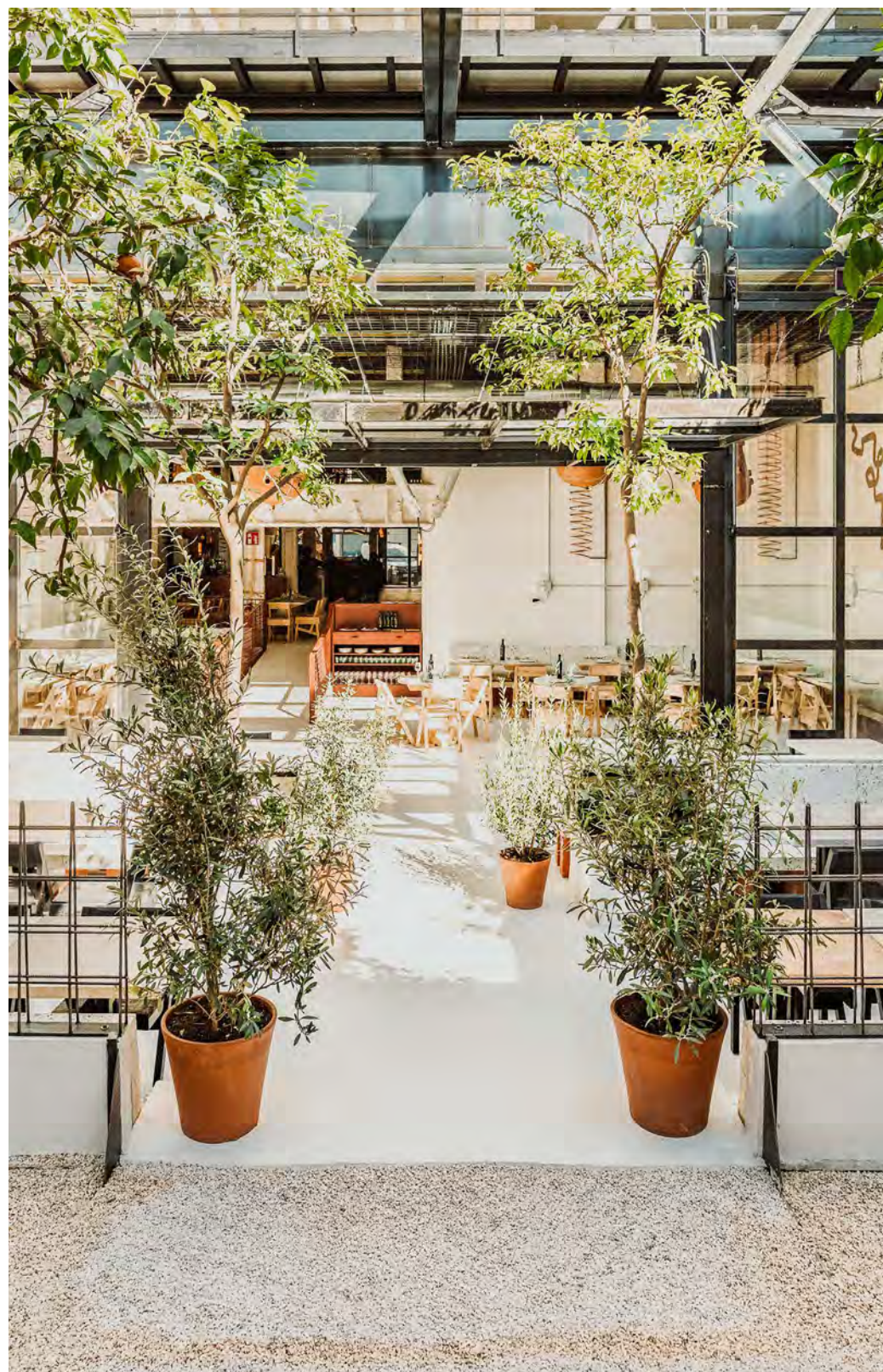
The Lucas Muñoz studio chose TOPCRET as a sustainable coating for various surfaces in the restaurant.

70% of the materials that were in the building were also reused -- elements such as the rubble to make benches, wood from the flooring to make chairs, and the reused fluorescent tubes from the parking lot.

The result is a place with an industrial, modern and cosy aesthetic, with a marvellous terrace where the vegetation and the orange trees - still growing - will also have their climatic function and acoustic reduction.







## Baxab® and the 3R's; Reduce, Recycle & Reuse.

BAXAB®, tested as the three time most resistant coating in the sector, becomes the choice for experts who seek to apply sustainability in architecture. But Topcret products offer much more:

### **We recycle**

Making our products with 15% raw material of recycled origin.

### **We reuse**

Re-using existing surfaces and floors.

### **We reduce**

We generate less waste and reduce the use of energy compared to other materials.

In addition, its application is manual, recovering the know-how of the professionals.



# CONSCIOUS PROJECT NORTON MOTORCYCLES

A space open to all, created under the principles of the **circular economy**.

---

+ Architecture: Bennetts Associates

---

+ Photography: Hufton + Crow

---

+ Location: Birmingham, UK

---

The iconic British brand Norton Motorcycles has made opened its new headquarters.

Bennetts Associates has created a space focused on the future, designed to work in a more sustainable way and that brings well-being to the people who work in it.

At the sustainability level, the project bases its distribution and workflows on the principles of the circular economy: reconfigure, adapt, reuse over time and minimise waste.

A project that is also open to all, in search of transparency and that shows the delicacy that exists in engineering.

Some 7,300 m<sup>2</sup> in which the brand values are evident, with state-of-the-art facilities.

Undoubtedly, an environment that shows its great commitment to quality in design, innovation and sustainability.







The best way to make something sustainable is to make it last.

Bennetts Associates is known for creating sustainable & durable architecture, which is why its experts chose Baxab®.

**Durability**

Three times more resistant than conventional microcements, it allows intensive and prolonged use.

**Endurance**

Seamless, despite the passage of time. Resistant to blows, scratches, stains, burns and sunlight.

**Safety**

It is waterproof, non-slip and easy to maintain.

In addition, it is made with 15% of raw material of recycled origin and its application generates less waste and use energy, compared to other materials.

The Expert's Choice

[london@topcret.com](mailto:london@topcret.com)  
Phone: +44 (0) 20 7624 2180

Office & Showroom:  
4 Hampstead West  
224 Iverson Rd, London NW6 2HL  
LONDON - UK

[barcelona@topcret.com](mailto:barcelona@topcret.com)  
T. +34 932 741 208

Oficina Central TOPCRET:  
Gran Via de les Corts Catalanes,  
828, 08013  
BARCELONA - ESPAÑA

[WWW.TOPCRET.COM](http://WWW.TOPCRET.COM)

TOPCRET LONDON / BARCELONA / MADRID / NEW YORK